

SF4102MCB

Product Family: Oven
Category: 45cm compact
Power supply: Electric
Heat source: Electric
Cooking method: Combi Microwave
Cleaning system: Vapor Clean
Oven control: Electronic
EAN code: 8017709253981



Aesthetics

Aesthetics: Linea
Serie: 2
Design: Flat
Colour: White
Material: Glass
Glass Type: Clear1
Serigraphy colour: Grey
Serigraphy type: Symbols

Door: Full glass
Handle: Linea
Handle Colour: Chromed
Logo: Silk screen

Programs / Functions

No. of cooking functions: 13
Automatic programmes: 24

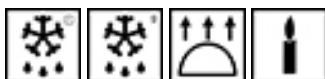
Traditional cooking functions



Microwave functions



Other functions



Cleaning functions



Controls

Display technology: LCD
Display generation: 1st
Control setting: Control knobs
No. of controls: 2
Control knobs: Linea

Illuminated control knobs

Options

Timer: Electronic
Time-setting options: Delay start and automatic end cooking
Minute minder
End of cooking acoustic alarm
Timer: 1
Limited Power Consumption Mode
Controls Lock / Child Safety

Other options: Keep warm, Eco light, Quick start
Showroom demo option
Tones: Standard
Rapid pre-heating

Technical Features

Temperature control: Electronic
Minimum Temperature: 30 °C
Maximum temperature: 250 °C
Cavity material: Ever clean Enamel
No. of shelves: 3
Shelves type: Metal racks
Tilting grill
No. of lights: 2
Light type: Halogen
Light Power: 40 W
Light when door is opened
Lower heating element power: 1000 W
Grill element - power: 2000 W
Circular heating element - Power: 1400 W
Door opening type: Standard opening

Door: Temperate door
Total no. of door glasses: 3
No. of thermoreflecting door glasses: 2
Soft Close hinges
Safety Thermostat
Heating suspended when door is opened
Cooling system: Tangential
Cooling duct: Single
Microwave screen protection
Microwave stops when door is opened
Usable cavity space dimensions (HxWxD): 212x462x407 mm

Performance / Energy Label

Net volume of the cavity: 40 litres
No. of cavities: 1
Gross volume: 50 litres
Microwave effective power: 1000 W

Accessories Included

Grid with back stop: 1
Insert grid: 1
Glass tray: 1

Electrical Connection

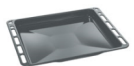
Voltage: 220-240 V
Electrical connection rating (W): 3100 W
Current: 14 A
Frequency (Hz): 50 Hz

Power supply cable length: 115 cm

Accessories not included



BN620-1
Enamelled tray, 20mm deep



BN640
Enamelled tray, 40mm deep



BNP608T
Teflon-coated tray, 8mm depth, to be placed on the grid



BVG
Glass tray and stainless steel grid, 40mm deep



GT1P-2
Partially extractable telescopic guides (1 level) for ovens with metal frames. Length: 355.5 mm, extraction: 285 mm.
Material: Stainless steel AISI 430 polished.



GT1T-2
Totally extractable telescopic guides (1 level) for ovens with metal frames. Length: 355.5 mm, extraction: 418.5 mm.
Material: Stainless steel AISI 430 polished.



KIT130S
Trim kit for 45 cm Linea ovens



PALPZ
Pizza shovel with fold away handle width: 315mm length : 325mm



PIR2
Steel pan with grid, glass top, not suitable for ovens with telescopic guides



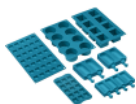
PPR2
Refractory pizza stone without handles. Squared shaped stone: L42 x H1,8 x D37,5 cm. Suitable also for gas ovens, to be put on the griddle.



PR3845X
Antifingerprint stainless steel. Cover for furniture in column installation of more ovens



SFLK1
Child lock



SMOLD
Set of 7 silicone moulds for ice creams, ice lollies, pralines, ice cubes or to portion food. Usable from -60°C to +230°C

